

“P” 9 (2015)

“M” 8 (2015)

Albany, New York

August 25, 2015

TO: All Enforcement Agencies and Magistrates

SUBJECT: New York State Agency, Political Subdivision (PSD), and NYS Thruway  
Authority License Plates

Effective May 6, 2014, the New York State Department of Motor Vehicles (DMV) began issuing new style license plates to all State agencies. On June 19, 2014, DMV began issuing the new style license plates to all political subdivisions (“PSD”) and to the NYS Thruway Authority.

The new style license plates are the standard gold license plates. Samples of the new license plates are shown below.

As of September 15, 2015, only the new style State, PSD and Thruway license plates will be valid. All old style license plates should have been replaced with the new style plates.

All old style “state” and all “official” license plates have been marked as invalid on DMV records.

The changes in the plates are as follows:

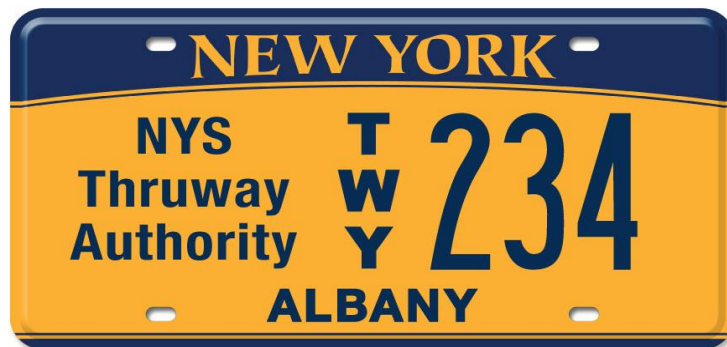
- State Plates
  - The agency name will appear to the left of the plate number.
  - The 1<sup>st</sup> two digits of the plate number are stacked vertically followed by the remaining 4 digits. When looking up the plate number, the entire plate number must be entered, including the stacked numbers.
  - A county of primary use sticker will display in the upper right corner.



- Political Subdivision (PSD) Plates
  - The PSD name will appear to the left of the plate number.
  - The 1<sup>st</sup> two characters of the plate number are stacked vertically followed by the remaining 4 digits. When looking up the plate number, the entire plate number must be entered, including the stacked letters.
  - County of registration will be displayed across the bottom.



- NYS Thruway Authority Plates
  - Authority name will appear to the left of the plate number.
  - TWY is stacked vertically followed by the remaining 3 digits. When looking up the plate number, the stacked letters must be entered.
  - County of registration will be displayed across the bottom.



Please share this information with your staff. Thank you.

Theresa L. Egan  
Executive Deputy Commissioner